



Specification



Product name: UHF RFID Tag

Item No.: LDR-5050L(H47)

Version: V1.0

Date: 2019.10.29

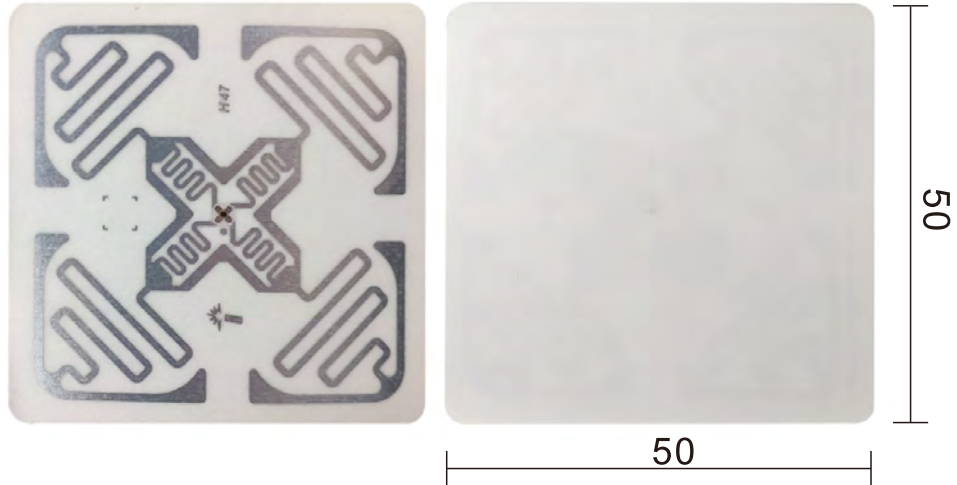
Tel: +86-755-89379391

Fax: +86-755-89379456

E-mail: sales@leadercolor.com

www.leadercolor.com

Add: 2F, Building A11, No.6 Xinfeng Road, Taizhong Industrial Zone, Longgang District, Shenzhen China 518172



Quick Details

LDR-5050L UHF RFID label is design for industrial RFID environment, especially used for supply chain, warehouse and file management. It is complaint with EPC C1G2 (ISO18000-6C) standard and it fits for all 860-960mhz UHF RFID readers and antennas. It supports printing on printer by rolls, size and chip can be customized.

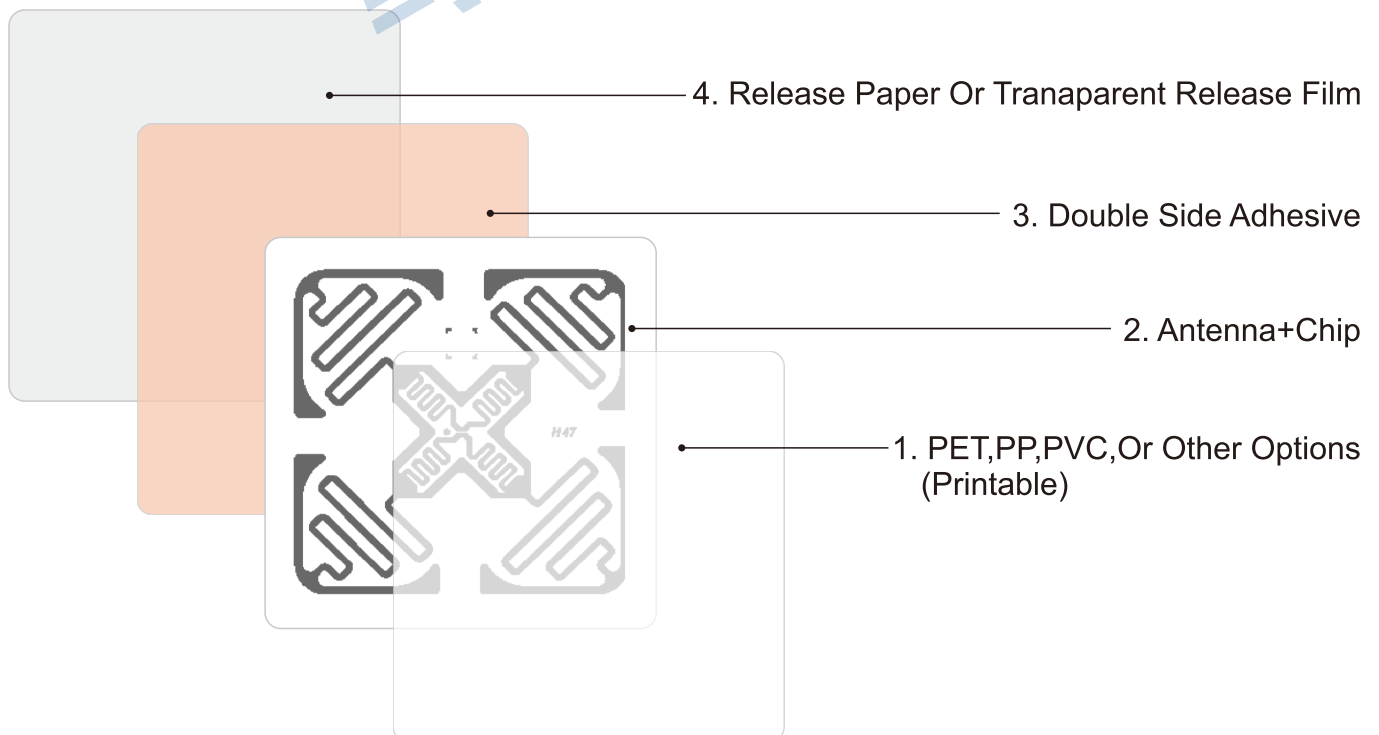
RFID Parameter

Model No.	LDR-5050L(H47)
Type	Passive UHF RFID Label
Protocol	ISO/IEC 18000-6C, EPC Class1 Gen2
Frequency	Worldwide 840-960Mhz, US 902-928mhz, EU 865-868Mhz
Chip	Impinj Monza4 H47
Memory	EPC 496bits/ TID 48bits /User 128bits
Read&Write	Supported
Read Range	1-6meters adjustable(reader and environment dependent)
Data retention	10years
Programming Cycles	100,000 cycles
Anti-collision	Yes
Installation	Self adhesive

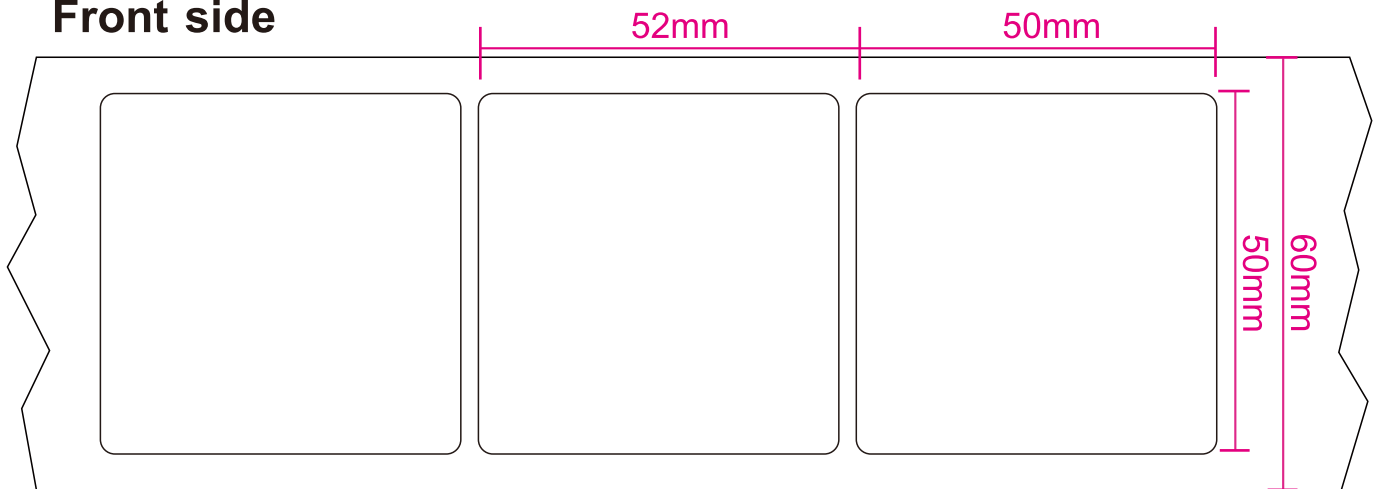
Physical Parameter

Size	50×50mm / 1.97×1.97inch
Substrate Material	Transparent Release Film
Antenna Material	Aluminum Etching
Surface Material	Coated Paper (Thermal or Transfer Optional)
Encode	Supported
Installation	Self adhesive
Operating Temperature	-25℃ ~ +65℃
Operating Humidity	20% ~ 90%RH
Package	2500pcs/roll
Customized Service	Optional Chips: Alien Higgs-3; Alien Higgs-4; NXP Ucode 7; Impinj Monza4; Impinj Monza5; Optional Materials: Coated Paper; PVC Paper; Synthetic PP Paper; PET Paper; Optional Glues: Standard Glues; 3M Glues; Strong Glues; Optional Printing: Offset Printing; Barcode Printing; Series Number Printing; UV Printing Optional Crafts: Tamper Proof ; Encoding;

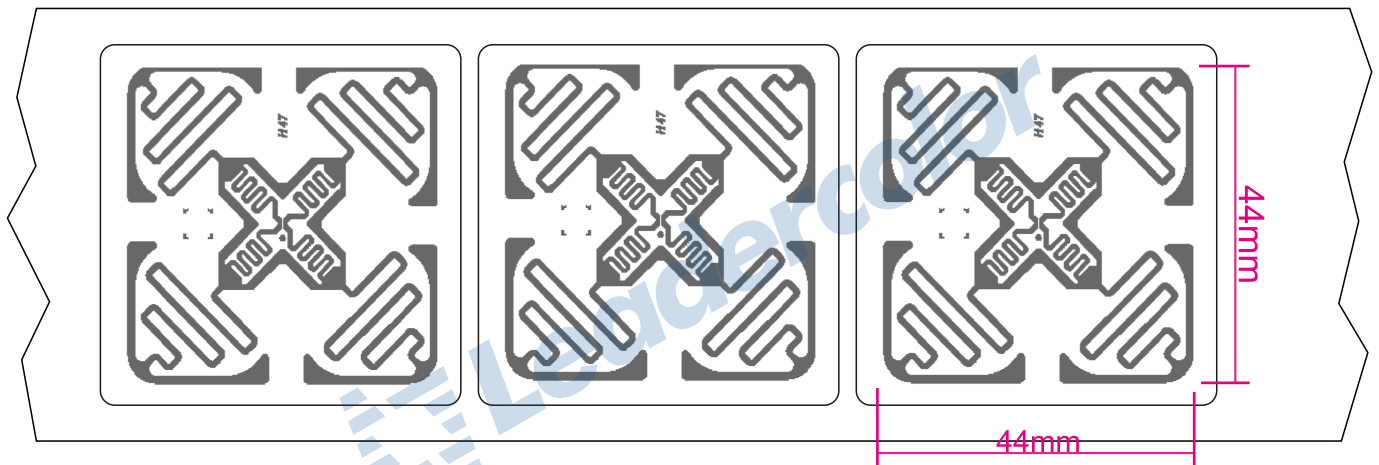
Structure



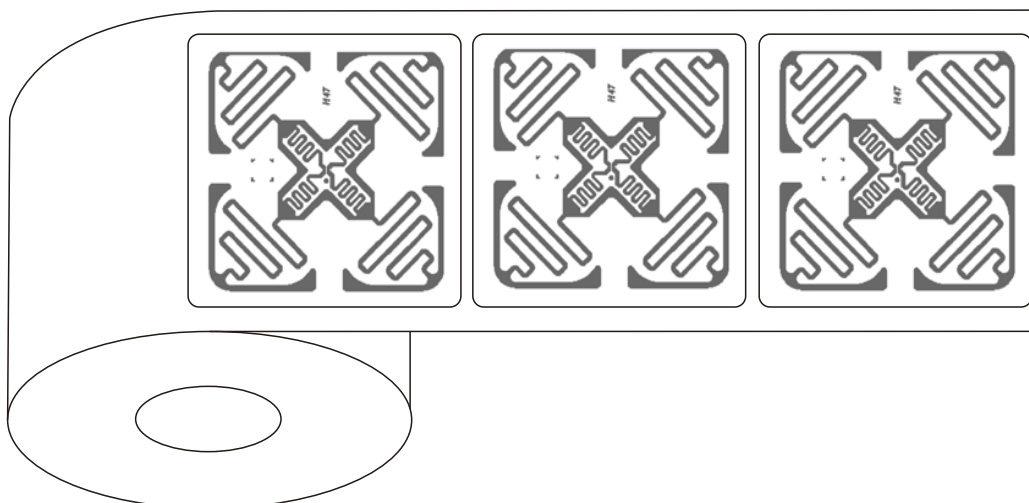
Front side



Back side



Expand Direction



Application

- Tracking challenging materials and objects
- Logistic and shipping labels
- File folder and document management
- Manufacturing and warehouse management

